

1) CONSTRUCTION:

CONDUCTOR: 26 AWG 7/34 STRANDED TINNED COPPER
 INSULATION: FOAMED FEP, .010" NOM. WALL THICKNESS
 PAIRS: COLOR CODED SINGLES TWISTED INTO PAIRS
 CABLE: (4) TWISTED PAIRS TWISTED TOGETHER TO FORM A CABLE CORE
 SHIELD: AN ALUMINUM POLYESTER ALUMINUM FOIL SHIELD (100% COVERAGE) WITH 7 ENDS OF 34 AWG TINNED COPPER DRAIN WIRE IN CONTACT WITH THE METALIZED SURFACE SHALL BE APPLIED OVER THE CABLE CORE.
 JACKET: LOW SMOKE POLYVINYLCHLORIDE, (COLOR, PER CHART 1), .021" NOM. WALL THICKNESS

NOM. DIA.
 .0189"
 .039"
 .078"
 .181"
 OVERALL CABLE DIAMETER .223" NOM. (BY CALIPER)

2) PHYSICAL PROPERTIES:

TEMPERATURE RATING, MAX. 105°C
 TEMPERATURE RATING, MIN. -20°C
 WT./M', NOM., NET. 22.2 LBS.

CHART 1:

QUABBIN P/N	JACKET COLOR
2056	BLACK
2057	BROWN
2058	RED
2059	ORANGE
2060	YELLOW
2061	GREEN
2062	BLUE
2063	VIOLET
2064	GRAY
2065	WHITE
2066	STARLIGHT BEIGE
2098	PINK

3) ELECTRICAL CHARACTERISTICS:

SEE PAGE 2

4) AGENCY APPROVALS:

NEC (ETL) TYPE CMP
 CEC C(ETL) TYPE CMP

5) APPLICATION:

RoHS COMPLIANT MATERIALS. MEETS TIA 568.2-D CAT 6A CHANNEL REQUIREMENTS AT 70 METERS. 10 METERS OF PATCH CABLE WITH A 90 METERS PERMANENT LINK (100 METER CHANNEL). SUPPORTS CAT 6A APPLICATIONS INCLUDING 10GBASE-T AT THESE LENGTHS, FOR OTHER COMBINATIONS SEE "CHANNEL REQUIREMENTS AND THE LENGTH OF STRANDED CABLE" TECHNICAL BRIEF. PATENT NO. US 9,355,759 B2

6) PRINT: (WHITE INK ON BLACK JACKET, ALL OTHERS BLACK INK)

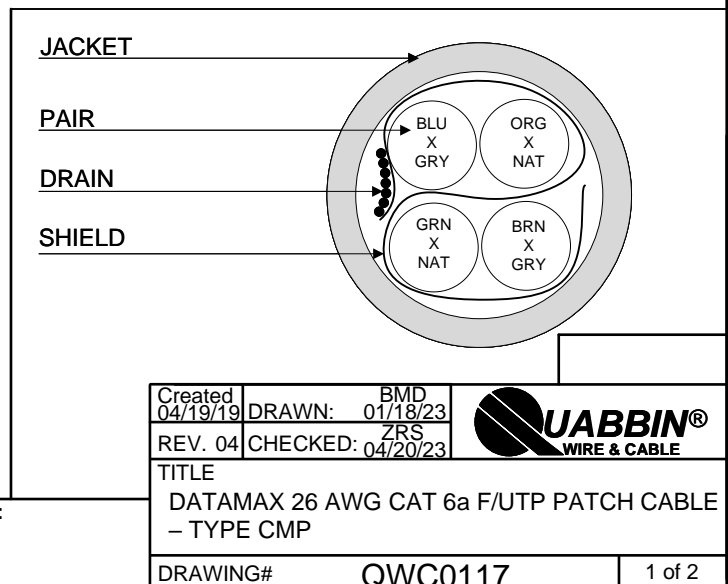
QUABBIN DATAMAX CAT 6a F/UTP PATCH CORD P/N
(QWC P/N PER CHART 1) -- PATENT NO. US 9,355,759 B2 --
 C(ETL)US TYPE CMP 26 AWG 105C -- RoHS --
(LOT DESIGNATOR) (SEQUENTIAL FOOTAGE)

7) COLOR CODE:

1. NATURAL X ORANGE
2. GRAY X BROWN
3. NATURAL X GREEN
4. GRAY X BLUE

8) PUT UPS

TO BE PACKAGED AS PER QWC'S STANDARD PACKAGING



CUSTOMER APPROVAL:

DATE:

Created 04/19/19	DRAWN: BMD 01/18/23	
REV. 04	CHECKED: ZRS 04/20/23	
TITLE DATAMAX 26 AWG CAT 6a F/UTP PATCH CABLE - TYPE CMP		
DRAWING#	QWC0117	1 of 2

